

# UNIVERSAL SINGLE RRU SUPPORT

ONLY FITS  
ERICSSON EQUIPMENT

FITS ERICSSON RRU MODELS: RRUW, RRU01, RRU11

## UNIVERSAL SINGLE RRU SUPPORT

is designed for installation of one RRU unit on mast, towers or other vertical and horizontal structures.

## FLEXIBILITY

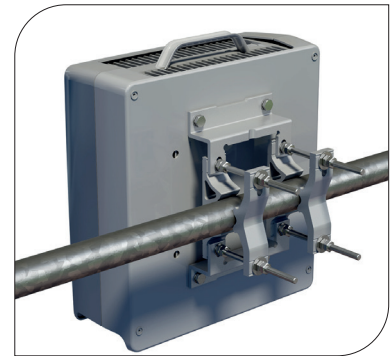
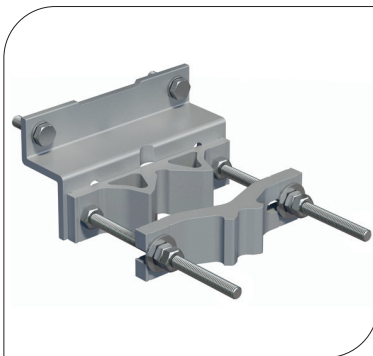
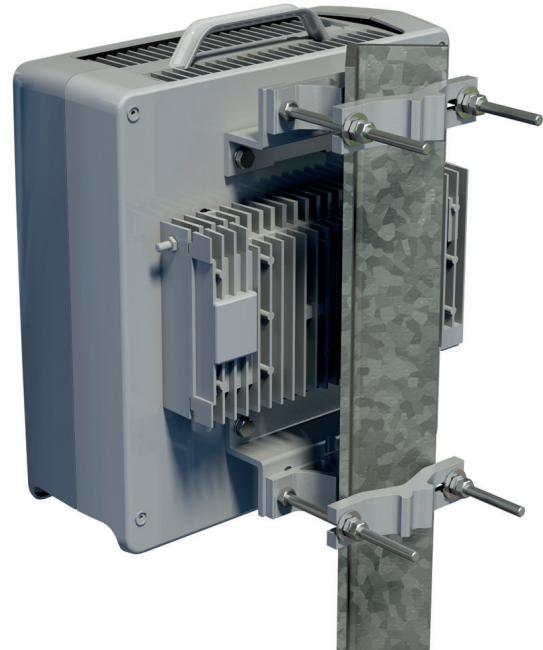
The support can be installed on a wide range of all common vertical and horizontal structures such as round, square, angle etc. It can also be installed on wall. The support is designed for both a RRU unit and for a RRU unit combined with a PSU or A2 unit.

## QUALITY

All components are made of anodized aluminum and acid proof stainless steel which gives the support excellent corrosion resistance.

## EASY ASSEMBLY

Handling and installation is very easy thanks to its light weight but also thanks to its clever design with elongated opening holes allowing the clamp to be opened and closed without any loose parts which rapidly speeds up the installation.



## ORDER AND TECHNICAL INFORMATION

DRAWING NO: CD 990849

FUNCTION DESCRIPTION: Universal Single RRU Support for installation on mast, tower or other vertical and horizontal structures as well as on wall. Fits all common RRU:s in Ericsson RRU family and other units with horizontal distance c/c 146 mm (5 ¾") such as RBS, PBC, GPE or A2 etc. When installing RRU it can also be combined with a PSU or A2 unit.

MOUNTING SPAN:	TUBES:	SQUARE PROFILES:	90° ANGLE	60° ANGLE
	○	□	∨	∨
Minimum	Ø25 mm (1,0 in)	35 x 35 mm (1,4 x 1,4 in)	35 x 35 mm (1,4 x 1,4 in)	40 mm (1,6 in) opening
Maximum	Ø120 mm (4,7 in)	90 x 90 mm (3,5 x 3,5 in)	90 x 90 mm (3,5 x 3,5 in)	100 mm (4,0 in) opening
PACKAGE DIMENSIONS:	LENGTH: 280 mm (11 in)	WIDTH: 90 mm (3,5 in)	HEIGHT: 90 mm (3,5 in)	WEIGHT: 3,3 kg (7,28 lb)

NOTE! RRU is not included.

## Quality Design